



**CONTACT-FREE CASH RECYCLING  
SOLUTIONS FOR RETAIL**

New customer-facing product range

# CASH PAYMENTS IN A COVID-19 ENVIRONMENT

Since the start of this pandemic, we have seen a clear change in the consumer and retail staff behavior towards payment methods.

Social distancing and hygiene have become the main concerns in retail stores, to protect both customers and employees.

Even so, there is still a demand for cash payments, as customers still want to have this payment option.

## How do we avoid physical contact while paying cash?

You can still offer a secure and fast cash payment experience to your customers and eliminate cash handling in your store by automating cash payments and cash handling processes.

The new INLANE is a contact-free customer-facing solution, that will help you keep your staff and customers safe.



# AUTOMATED CASH PAYMENTS BENEFITS



## CONTACT-FREE

No need to exchange cash



## HYGIENIC

Avoid handling cash and food at the same time



## FULL VISIBILITY OF CASH

Access a Reporting and Analytics Platform 24/7



## FAST SERVICE

Reduces queuing and time spent handling cash



## SECURE

Helps to prevent internal theft and robberies



## CASH LEVELS ALERTS

Be aware of the change you need in advance



## INCREASES EFFICIENCY

Frees staff from handling cash to focus on customer service



## MINIMISES HUMAN ERROR

Eliminates cash handling and counterfeits.



## QUICK RECONCILIATION

Easy and quick reconciliation at the end of the day



## INLANE SOLUTIONS

Customer-facing note and coin recycling solutions designed to be implemented at the Point of Sale (POS). It allows customers to pay both notes and coins directly into the machine when paying by cash. The unit will count, store, and dispense change back directly to the customer.

Our INLANE products are affordable, low-cost note and coin recycling solutions ideal for retail environments like supermarkets, pharmacies, bakeries, convenience stores, food courts, and fashion/apparel with lower cash volumes.

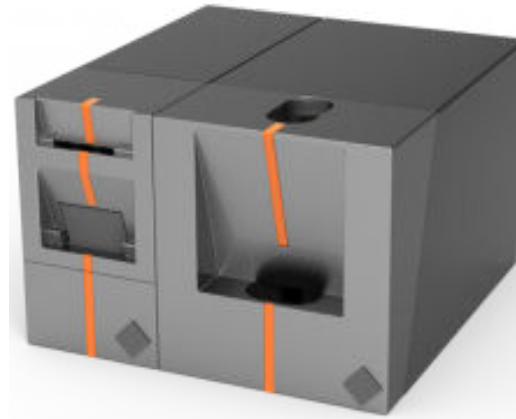
The INLANE range offers a flexible note and coin capacity to suit your store needs and dimensions.

### Counter top unit dimensions:

Width: 520mm, Depth: 550mm, Height: 335mm

### Free standing or in-counter dimensions:

Width: 520mm, Depth: 550mm, Height: 820mm



Counter top unit



Free standing or in-counter unit



## Flexible note capacity



**INLANE 300 DESKTOP**

**INLANE 300 DEPO**

**INLANE 600**

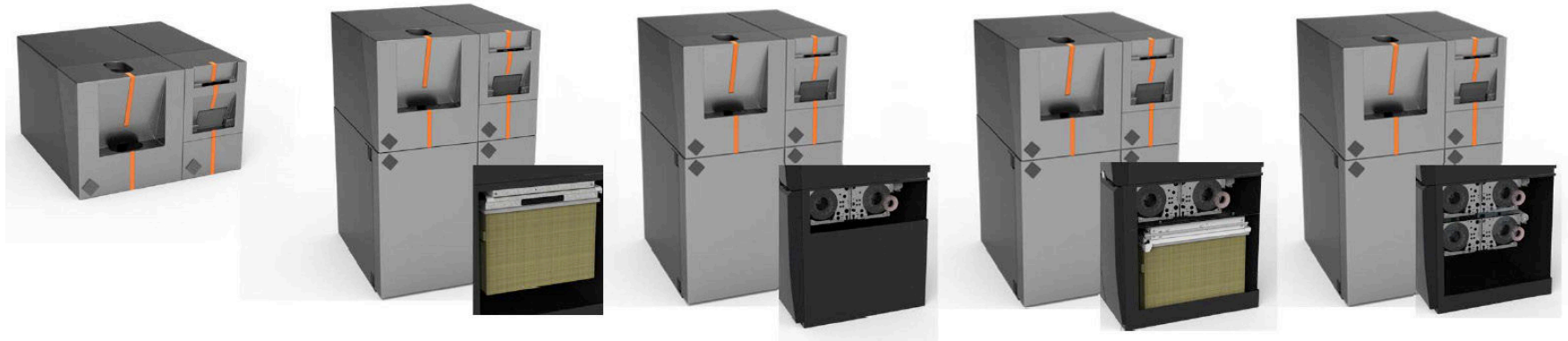
**INLANE 600 DEPO**

**INLANE 900**

<b>Rolled Storage Modules (RSMs)</b>	3 RSMs (100 notes/RSMs)	3 RSMs (100 notes/RSMs)	3 RSMs (100 notes) 2 RSMs (150 notes)	3 RSMs (100 notes) 2 RSMs (150 notes)	3 RSMs (100 notes) 4 RSMs (150 notes)
<b>Recycling Capacity</b>	300 banknotes	300 banknotes	600 banknotes	600 banknotes	900 banknotes
<b>Overflow cassette</b>	350 banknotes	350 banknotes	350 banknotes	350 banknotes	350 banknotes
<b>Canvas bag</b>	-	1,500 banknotes	-	700 banknotes	-
<b>Total Capacity</b>	650 banknotes	2,100 banknotes	950 banknotes	1,650 banknotes	1,250 banknotes
<b>Deposit speed</b>	2 banknotes/sec	2 banknotes/sec	2 banknotes/sec	2 banknotes/sec	2 banknotes/sec
<b>Dispense speed</b>	3 banknotes/sec	3 banknotes/sec	3 banknotes/sec	3 banknotes/sec	3 banknotes/sec



## Flexible coin capacity



**INLANE 300 DESKTOP**

**INLANE 300 DEPO**

**INLANE 600**

**INLANE 600 DEPO**

**INLANE 900**

<b>Recycling Hoppers</b>	Up to 8 hoppers	Up to 8 hoppers	Up to 8 hoppers	Up to 8 hoppers	Up to 8 hoppers
<b>Recycling Capacity</b>	From 200 to 750 coins per hopper (depending on the coin diameter)	From 200 to 750 coins per hopper (depending on the coin diameter)	From 200 to 750 coins per hopper (depending on the coin diameter)	From 200 to 750 coins per hopper (depending on the coin diameter)	From 200 to 750 coins per hopper (depending on the coin diameter)
<b>Canvas bag</b>	-	18kg (3,000 coins approx. depending on the coin diameter)	-	18kg (3,000 coins approx. depending on the coin diameter)	-
<b>Total Capacity</b>	3,200 coins approx. (depending on the coin diameter)	6,200 coins approx. (depending on the coin diameter)	3,200 coins approx. (depending on the coin diameter)	6,200 coins approx. (depending on the coin diameter)	3,200 coins approx. (depending on the coin diameter)
<b>Deposit speed</b>	10 coins/sec	10 coins/sec	10 coins/sec	10 coins/sec	10 coins/sec
<b>Dispense speed</b>	6 coins/sec	6 coins/sec	6 coins/sec	6 coins/sec	6 coins/sec





[www.sprintquip.com.au](http://www.sprintquip.com.au)