

BoscoLighting SLK/CLK Trimless Downlight Installation Instruction

Introduction

Thank you for choosing BoscoLighting products.

This document aims to guide a qualified installer or electrician in installing of this product to ensure correct function and safety. Note by Law, certain electrical works must be completed by a licensed electrician. Each State maintains their own licensing system, for more information see www.erac.gov.au/index.php?Itemid=516.

Warranty

Your BoscoLighting light fitting is covered by a 3 year warranty. Please retain proof of purchase or register your purchases by sending an email to warranty@boscolighting.com.au by attaching a copy of your purchase invoice, details of the end user (name, company, phone and address) and electricians company and electrical license number.

Warranty will be void if there is any damage due to improper installation, modification to the fitting except from the standard issued parts and features or used for purposes other than the intended purpose and safety precautions and warnings had been disregarded, site issues like voltage surges, vandalism or rodent damage.

Safety Instructions

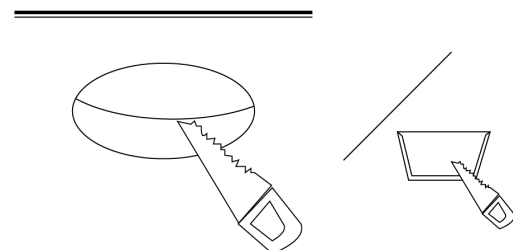
- First and foremost, do not install or operate the fitting if it appears to be damaged in any way. Please inform your local supplier or send an email to warranty@boscolighting.com.au as stated on the warranty section of this document.
- Before installation, check the installation location in the ceiling if it has an access to a socket outlet which is connected to a wall switch. If it does not, a socket

should be installed on a lighting circuit according to electrical standards by a licensed electrician.

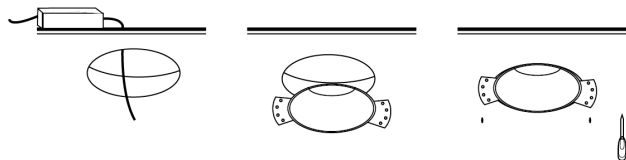
- Before installation, check the installation location in the ceiling if it has an access to a socket outlet which is connected to a wall switch. If it does not, a socket should be installed on a lighting circuit according to electrical standards by a licensed electrician.
- These products are rated with Ingress Protection 20 (IP20) which means they are suitable ONLY for all indoor dry applications such as offices, retail shops, bedrooms and living rooms.
- Turn off the fuse/circuit breaker that controls the power to the area or fixtures that you are working on. Turn off as well the light switches on your wall and do not forget to test the electrical wires for voltage presence before you start working to avoid unexpected electrical shock.
- Use proper electrical protective gears and electrical tools during the installation.

Installation Instructions

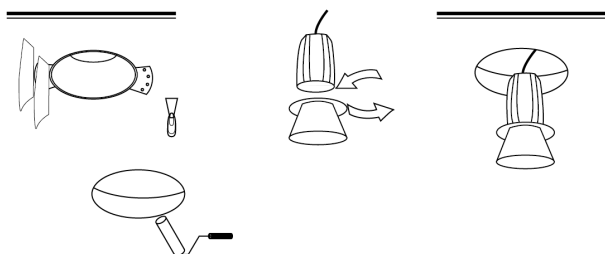
STEP 1: Cut hole into the ceiling as per the required cut-out size and shape.



STEP 2: Connect the power plug onto the power supply socket. Put the LED driver into the ceiling and carefully place the mounting frame onto the ceiling then secure it using gyprock/drywall screws.

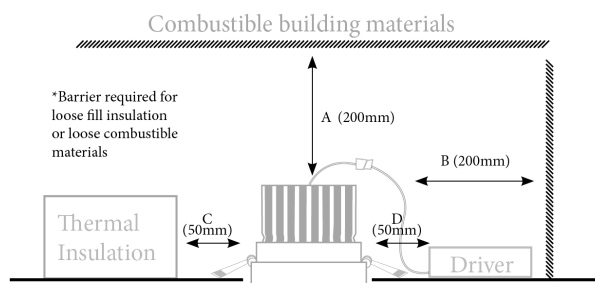


STEP 3: Patch over the mounting frame with stucco or plaster and paint per ceiling colour and let it dry. Once the paint has dried, twist and click the light into the reflector and then connect the power supply cable of the light into the driver. Align notches in reflector with mounting frame and push upwards, it will click into place. To remove, push upwards to release spring.



Clearance Information

- The LED recessed downlight should have at least a 50mm air gap from any insulation, barriered loose combustible materials or any structural materials. This will help as well to properly dissipate the heat produced by the LED recessed light. Please note that a suitable barrier is required for loose fill insulation or loose combustible materials.



Location and Description	Clearance
A- Top clearance to combustible building element	200mm
B- Side clearance to combustible building element	200mm
C- Side clearance to bulk thermal insulation	50mm
D- Clearance to auxiliary equipment(LED drivers)	50mm

Maintenance

- Make sure that the power to the light fitting has been turned off and has given the time to cool down after being used before you start of cleaning the lighting fixture. Cleaning must be done at interval schedules to ensure to have a better lighting.
- Use damp clean cloth to wipe the dirt that adhered to the light fitting. Never try to immerse the light fitting in water.
- Use static free gloves when cleaning the luminaire to avoid markings.

Disclaimers

- BoscoLighting is not liable where :
 - There is product malfunction and or any damages caused by improper use or installation.
 - Installation has not completed by licensed electricians.
 - Safety instructions have not been properly followed.
 - Damage due to site issues such as voltage surges, rodent damage or vandalism.
- Kindly be advised that the lights are NOT specifically designed to be installed outdoor, on wet and damp locations, hazardous and or corrosives areas.
- Lights has been designed to operate at an ambient temperature of -10°C to 45°C.
- Lights found out to be tampered with or have been tried to be repaired apart from the supplier/manufacturer during the warranty period shall void the warranty of the product. Hence, any

damages caused by the said act will not be
BoscoLighting's liability.

- BoscoLighting has the right to modify or obsolete the design of its products for quality improvement or due to supplier constraints.
- Products may appear different to product data sheets or installation instructions.