

## BoscoLighting Extrusion Installation Instruction

### Introduction

Thank you for choosing BoscoLighting products.

This document aims to guide a qualified installer or electrician in installing of this product to ensure correct function and safety. Note by Law, certain electrical works must be completed by a licensed electrician. Each State maintains their own licensing system, for more information see [www.erac.gov.au/index.php?Itemid=516](http://www.erac.gov.au/index.php?Itemid=516).

### Warranty

Your BoscoLighting light fitting is covered by a 3 year warranty. Please retain proof of purchase or register your purchases by sending an email to [warranty@boscolighting.com.au](mailto:warranty@boscolighting.com.au) by attaching a copy of your purchase invoice, details of the end user (name, company, phone and address) and electricians company and electrical license number.

Warranty will be void if there is any damage due to improper installation, modification to the fitting except from the standard issued parts and features or used for purposes other than the intended purpose and safety precautions and warnings had been disregarded, site issues like voltage surges, vandalism or rodent damage.

### Safety Instructions

- First and foremost, do not install or operate the fitting if it appears to be damaged in any way. Please inform your local supplier or send an email to [warranty@boscolighting.com.au](mailto:warranty@boscolighting.com.au) as stated on the warranty section of this document.
  - Electrical connections and wirings must be carried out by a licensed electrician in conformance with the electrical standards.

- BoscoLighting extrusions can be installed surface mounted, suspended or recessed. Please make sure that you have sufficient structural support for any of these installations. Standard supply lengths for extrusions are 1 or 2 meters, customised lengths may also be available as per order.
- It is standard to supply extrusion with strips and drivers separately to be assembled together onsite. We also offer a pre-assembly service where the strips are installed into the extrusions for an extra fee.
- Turn off the fuse/circuit breaker that controls the power to the area or fixtures that you are working on. Turn off as well the light switches on your wall and do not forget to test the electrical wires for voltage presence before you start working to avoid unexpected electrical shock.
- Please use our IP65 LED strip when the installation is in a wet or damp location.
- Use proper electrical protective gears and electrical tools during the installation.

### Installation Instructions

- **STEP 1:** When making a customized cut-length, please put a painter or masking tape first on the area where you are going to do the cut then mark the desired measured cut-length on top of the tape. Please use an L-Square ruler to ensure that you have a perfect 90 degrees perpendicular guide mark. The tape on the

other hand, will ensure that the diffuser will hold in place during the cutting and to have the extrusion including the diffuser free from scratch after.

If you do not wish to make a customised cut-length or you have already pre-ordered a customised cut-length with us, please skip STEP 2 and proceed to STEP 3.

**STEP 2:** Please use a hacksaw or circular saw for cutting the extrusion to the required length. It is advisable to use a saw with more cutting teeth for a better cut. Once the cutting is done, remove the diffuser and clean the extrusion inside and out for any debris due to cutting. You may use a metal file to smoothen out the sharp edges on the extrusion then prepare the extrusion for LED strip/s and power supply (driver) installation by cleaning the surface with isobutanol where the LEDs will be mounted.

Some of our extrusions are able to be installed with the driver mounted inside\*, but for smaller size extrusions, driver should be installed remotely. To install drivers internally to the extrusion, please seek advice from BoscoLighting for recommendations specific to your case. Incorrect installation of drivers within an extrusion will limit or negate BoscoLighting's Warranty Liability.

Please also refer to our **“LED Strip Lights Installation Instruction”** manual which you can download from our website for effective and efficient LED strip light installation.

\*Limited to lower wattage drivers inside larger fittings. May require extra grounding, we recommend pre-assembly at an extra fee if you require integral drivers in extrusion lighting. Not available for 0-10V or DALI dim drivers due to size constraints.

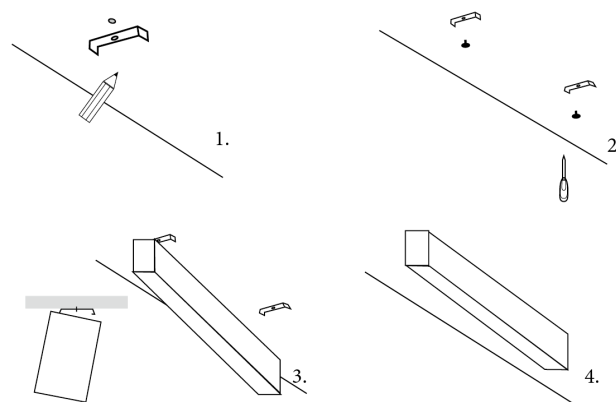
### STEP 3:

#### ● Surface Mounted Installation:

##### ○ For Extrusions supplied with mounting clips:

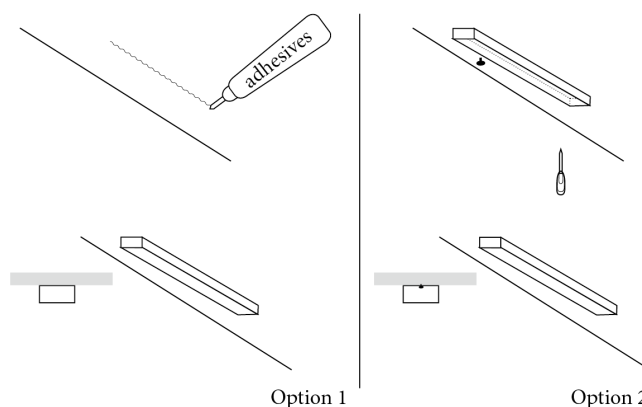
- Use the mounting clip holes as a pattern to mark the drill holes and make sure that the drill bit is slightly narrower in diameter than the metal

screws so the screws would be able to cling into the surface once installed. Once drilling is done, snap in the extrusion into the mounting clips. For masonry installation, please use a concrete anchors for the screws.



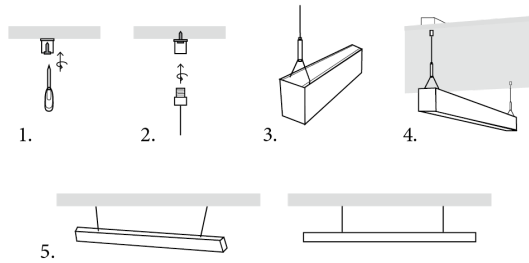
##### ○ For Extrusions not supplied with mounting clips:

- Many of our smaller extrusion designs are not supplied with mounting clips, they can generally be installed with high strength bonding adhesives or by drilling holes directly into the back of the extrusion and using flush screws to hold in place.

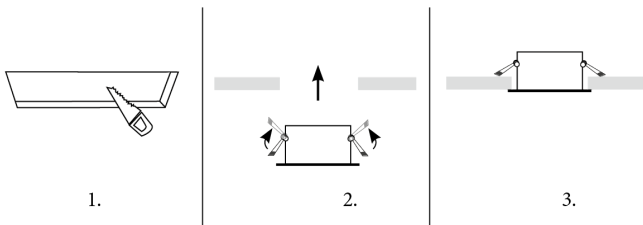


- **Suspended Installation:** Install the extrusion suspension cable into the ceiling first with the provided metal screws and install the other end into the extrusion, one at a time. Care must be taken with installing the screws that they are straight and fully set in place. Then adjust the length of the suspension cable as per the preferred height. Make sure that the

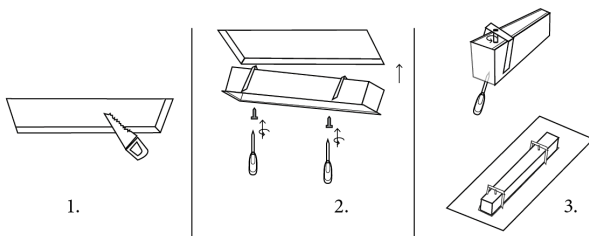
extrusion has been properly levelled using a spirit (or bubble) level.



- **Recessed Installation:** Make a cut-out into the ceiling or wall as per the required cut-out dimensions. Mounting accessory depends on the type or design of the extrusion. For extrusion with spring clips, install first the spring clips into the extrusion then push upward the spring clips while carefully placing the extrusion into the ceiling or wall. The spring clips will then hold the extrusion firmly into place.



For clips/brackets, install first the clips/brackets into the extrusion with the provided screws then position the extrusion in place. Drive the screws of the recessed clips/brackets which will spin and stop to the correct angle position. As you keep driving the screws, the gap between the clips/brackets and the ceiling will be narrowed down then eventually will hold the extrusion firmly into place



**STEP 4:** Double check the electrical wirings and connections before turning on the power to the aluminium LED profile or extrusion.

## Maintenance

- Make sure that the power to the aluminium LED profile or extrusion has been turned off and has given the time to cool down after being used before you start of cleaning the lighting fixture. Cleaning must be done at interval schedules to ensure to have a better lighting.
- Use damp clean cloth to wipe the dirt that adhered to the light fitting. Never try to immerse the light fitting and its components in water.
- Use static free gloves when cleaning the luminaire to avoid markings.

## Disclaimers

- BoscoLighting is not liable where :
  - There is product malfunction and or any damages caused by improper use or installation.
  - Installation has not completed by licensed electricians.
  - Safety instructions have not been properly followed.
  - Damage due to site issues such as voltage surges, rodent damage or vandalism.
- Kindly be advised that the aluminium LED profile are not specifically designed to be installed on hazardous, corrosives and or flammable areas.
- The aluminium LED profile has been designed to operate at an ambient temperature of -10°C to 45°C.
- Aluminium LED profile found out to be tampered with or have been tried to be repaired apart from the supplier/manufacturer during the warranty period shall void the warranty of the product. Hence, any damages caused by the said act will not be BoscoLighting's liability.
- BoscoLighting has the right to modify or obsolete the design of its products for quality improvement or due to supplier constraints.
- Products may appear different to product data sheets or installation instructions.