

BoscoLighting LED Strip Lights Installation Instruction

Introduction

Thank you for choosing BoscoLighting products.

This document aims to guide a qualified installer or electrician in installing of this product to ensure correct function and safety. Note by Law, certain electrical works must be completed by a licensed electrician. Each State maintains their own licensing system, for more information see www.erac.gov.au/index.php?Itemid=516.

Warranty

Your BoscoLighting light fitting is covered by a 3 year warranty. Please retain proof of purchase or register your purchases by sending an email to warranty@boscolighting.com.au by attaching a copy of your purchase invoice, details of the end user (name, company, phone and address) and electricians company and electrical license number.

Warranty will be void if there is any damage due to improper installation, modification to the fitting except from the standard issued parts and features or used for purposes other than the intended purpose and safety precautions and warnings had been disregarded, site issues like voltage surges, vandalism or rodent damage.

Safety Instructions

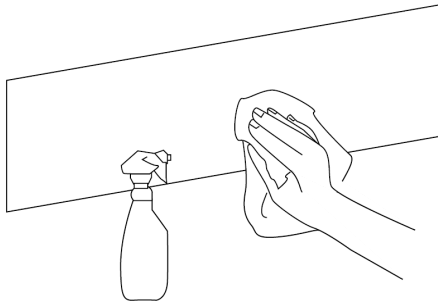
- First and foremost, do not install or operate the fitting if it appears to be damaged in any way. Please inform your local supplier or send an email to warranty@boscolighting.com.au as stated on the warranty section of this document.
- Strip lights do not come with supplied heat dissipation and need to be installed on to a metal surface capable of dissipating heat adequately. Our preferred

installation method is in our stylish [Aluminium Extrusion products](#), and these installation instructions are for this type of installation. Apart from this, correctly matching the appropriate aluminium extrusion with the LED strip will prevent noticeable LED dots and striped patterns and should result in a much better looking installation along with the longevity of the LED strip products.

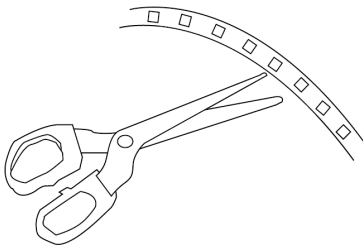
- Please make sure also that you have chosen our waterproof LED strip light if the installation is in wet, damp or overly humid location such as Bathrooms, Laundries and outdoors.
- Make sure you use the correct power supply to avoid electrical failure and to make your LED strip last longer. Drivers should be loaded with no more than 80% of their rated output wattage, including an allowance for all resistance such as from connections and leads and also to achieve designed longevity. Using improper power supply would cause low light dissipation and flickering. Please feel free to contact us for advice and assistance.
- To avoid voltage drop, please be guided that the advisable maximum linear lighting connection per tail from a driver should not exceed 5000 mm.
- Use proper electrical protective gears and electrical tools during the installation.

Installation Instructions

STEP 1: Make sure to firstly clean the surface that the LED strips will be mounted onto from all dust, water, moisture, grease or otherwise. A cleaning agent such as Methylated Spirits or Rubbing Alcohol may be useful, but allow time to dry. You will need to use a dry and lint-free cloth to properly clean the surface.

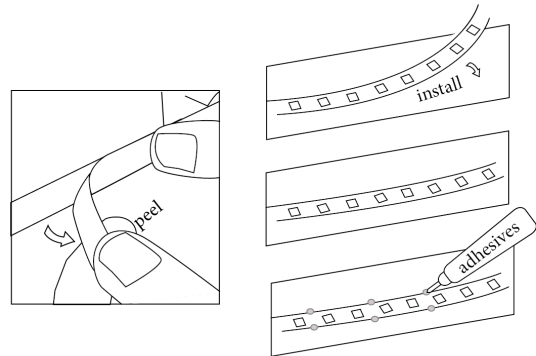


STEP 2: Take measurement of the desired length and cut through the provided cut-line on the LED strip using sharp scissor. Our LED strip lights come with a self-adhesive tape backing from 3M™, do not remove the adhesive tape cover until ready to install the LED strip.

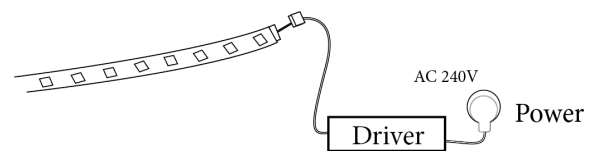


STEP 3: Our LED strip lights also comes with standard connection end tail. If you need to make an additional connections or lengths, you may use LED strip connector or solder the connection. Otherwise, you may carefully then place the strip by removing the adhesive tape cover. Some finishes do not bond well with the LED tape backing resulting in the adhesive not working properly. We always recommend dabbing extra adhesive such as [Selleys Liquid Nails Clear™](#) along the strip to safeguard, approximately every 200 mm on each side of the strip will be sufficient in most cases. Note that this product can also be used to prevent water ingress into the extrusion although we still recommend using

waterproof strips in necessary locations and not relying on this alone.



STEP 4: Finalise the connection by connecting the driver into the LED strip light, connect to the power source and then turn on the lights.



Maintenance

- Make sure that the power to the LED strip light has been turned off and has given the time to cool down after being used before you start of cleaning. Cleaning must be done at interval schedules to ensure to have a better lighting.
- Since LED are sensitive to static electricity, use static free gloves when cleaning.
- Use clean non-static cloth to wipe the dirt that adhered to the LED strip light as well as to the extrusion and diffuser.
- Never try to immerse the LED strip light and its components in water.

Disclaimers

- BoscoLighting is not liable where:
 - There is product malfunction and or any damages caused by improper use or installation.
 - Installation has not completed by licensed electricians.
 - Safety instructions have not been properly followed.
 - Damage due to site issues such as voltage surges, rodent damage or vandalism.
- Our warranty will not cover LED Strip products not properly installed on a suitable metal surface.
- LED strip lights has been designed to operate at an ambient temperature of -10°C to 45°C.
- BoscoLighting cannot guarantee our strip lights that have been installed with an ill-matched driver.
- LED strip lights found out to be tampered with or have been tried to be repaired apart from the supplier/manufacturer during the warranty period shall void the warranty of the product. Hence, any damages caused by the said act will not be BoscoLighting's liability.
- BoscoLighting has the right to modify or obsolete the design of its products for quality improvement or due to supplier constraints.
- Products may appear different to product data sheets or installation instructions.