

BoscoLighting LED Pendant Lights Installation Instruction

Introduction

Thank you for choosing BoscoLighting products.

This document aims to guide a qualified installer or electrician in installing of this product to ensure correct function and safety. Note by Law, certain electrical works must be completed by a licensed electrician. Each State maintains their own licensing system, for more information see www.erac.gov.au/index.php?Itemid=516.

Warranty

Your BoscoLighting light fitting is covered by a 3 year warranty. Please retain proof of purchase or register your purchases by sending an email to warranty@boscolighting.com.au by attaching a copy of your purchase invoice, details of the end user (name, company, phone and address) and electricians company and electrical license number.

Warranty will be void if there is any damage due to improper installation, modification to the fitting except from the standard issued parts and features or used for purposes other than the intended purpose and safety precautions and warnings had been disregarded, site issues like voltage surges, vandalism or rodent damage.

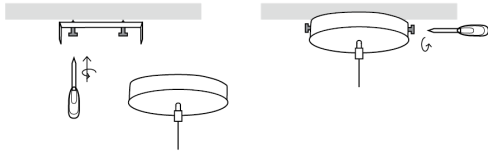
Safety Instructions

- First and foremost, do not install or operate the fitting if it appears to be damaged in any way. Please inform your local supplier or send an email to warranty@boscolighting.com.au as stated on the warranty section of this document.
- Electrical connections and wirings must be carried out by a licensed electrician in conformance with the electrical standards.

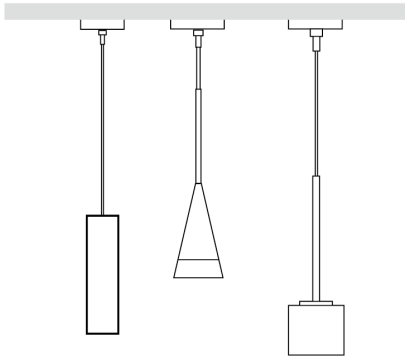
- BoscoLighting Pendant Lights are rated with Ingress Protection 20 and 44 (IP20 & IP44). IP20 rated fittings are only designed for ordinary use and not applicable to be used in wet or damp locations. IP44 rated fittings can withstand splashes of water and can be used in areas like bathrooms and kitchens. However, please be reminded that our current pendant light designs are not waterproof and not advisable to be used outdoors.
- Turn off the fuse/circuit breaker that controls the power to the area or fixtures that you are working on. Turn off as well the light switches on your wall and do not forget to test the electrical wires for voltage presence before you start working to avoid unexpected electrical shock.
- Please be careful with the height of the pendant light should not bump into persons head when installed.
- Please do not put any undue stress on the fitting, it is designed to support its own weight only and not to be used to support other hanging items or people.
- Use proper electrical protective gears and electrical tools during the installation.

Installation Instructions

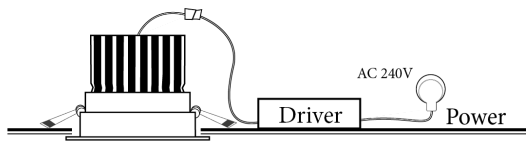
STEP 1: Unbox the pendant light and prepare the materials and tools which are going to be needed. Fix the mounting base into the ceiling using metal screws. Measure the desired length or height of the pendant light from the ceiling and cut the excess electrical cord.



STEP 2: Connect the pendant light electrical cord into the supply cables using an electrical junction block or other approved method. Double check the electrical wirings and once done, fix the mounting cover or canopy into place.



STEP 3: Once fully inserted, the clip shall hold perfectly the LED recessed downlight in place.



Maintenance

- Make sure that the power to the pendant light has been turned off and has given the time to cool down after being used before you start of cleaning the lighting fixture. Cleaning must be done at interval schedules to ensure to have a better lighting.
- Use damp clean cloth to wipe the dirt that adhered to the light fitting. Never try to immerse the light fitting in water.
- Use static free gloves when cleaning the luminaire to avoid markings.

Disclaimers

- BoscoLighting is not liable where :
 - There is product malfunction and or any damages caused by improper use or installation.
 - Installation has not completed by licensed electricians.
 - Safety instructions have not been properly followed.
 - Damage due to site issues such as voltage surges, rodent damage or vandalism.
- Kindly be advised that the lights are not specifically designed to be installed on flammable, hazardous and or corrosives areas.
- Lights has been designed to operate at an ambient temperature of -10°C to 45°C.
- Lights found out to be tampered with or have been tried to be repaired apart from the supplier/manufacturer during the warranty period shall void the warranty of the product. Hence, any damages caused by the said act will not be BoscoLighting's liability.
- BoscoLighting has the right to modify or obsolete the design of its products for quality improvement or due to supplier constraints.
- Products may appear different to product data sheets or installation instructions.