

BoscoLighting Wall Light Installation Instruction

Introduction

Thank you for choosing BoscoLighting products.

This document aims to guide a qualified installer or electrician in installing of this product to ensure correct function and safety. Note by Law, certain electrical works must be completed by a licensed electrician. Each State maintains their own licensing system, for more information see www.erac.gov.au/index.php?Itemid=516.

Warranty

Your BoscoLighting light fitting is covered by a 3 year warranty. Please retain proof of purchase or register your purchases by sending an email to warranty@boscolighting.com.au by attaching a copy of your purchase invoice, details of the end user (name, company, phone and address) and electricians company and electrical license number.

Warranty will be void if there is any damage due to improper installation, modification to the fitting except from the standard issued parts and features or used for purposes other than the intended purpose and safety precautions and warnings had been disregarded, site issues like voltage surges, vandalism or rodent damage.

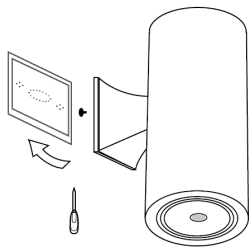
Safety Instructions

- First and foremost, do not install or operate the fitting if it appears to be damaged in any way. Please inform your local supplier or send an email to warranty@boscolighting.com.au as stated on the warranty section of this document.
- Electrical connections and wirings must be carried out by a licensed electrician in conformance with the electrical standards.

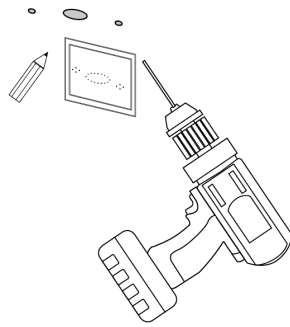
- Make sure that you have chosen the suitable light fitting with the correct IP rating based on the installation location or environment. For more detailed information regarding IP ratings, please refer to the IP rating section below.
- Turn off the fuse/circuit breaker that controls the power to the area or fixtures that you are working on. Turn off as well the light switches on your wall and do not forget to test the electrical wires for voltage presence before you start working to avoid unexpected electrical shock.
- Please do not put any undue stress on the fitting, it is designed to support its own weight only. Not to be used to support hanging items or people.
- Use proper electrical protective gear and electrical tools during the installation.

Installation Instructions

STEP 1: Unscrew and remove the base plate at the back of the wall light and use it to mark the position of the screw holes. Use an electric drill to make holes for the metals screws. If drilling into masonry, ensure appropriate drill bits and hammer drill setting is used and that masonry plugs or otherwise are used to hold the screws in place. If into metal, ensure all sharp edges are smoothed and that the cables will not be damaged or worn by the edges. Ensure drill holes have adequately cooled before proceeding further.

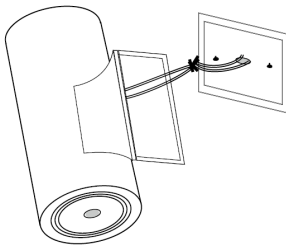


Unscrew and remove the base plate

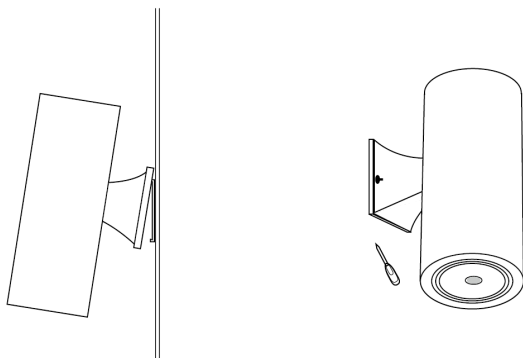


Mark the position

STEP 2: Once done, place the wall light mounting bracket into position then fix it to the wall using metal screws then connect the electrical wirings.



STEP 3: Put back the light fitting into the wall bracket using the same metal screws which had been removed initially. Please double check the connections before turning on the power and switching on the light.



Maintenance

- Make sure that the power to the LED recessed downlight has been turned off and has given the time

to cool down after being used before you start of cleaning the lighting fixture. Cleaning must be done at interval schedules to ensure to have a better lighting.

- Use damp clean cloth to wipe the dirt that adhered to the light fitting. Never try to immerse the light fitting in water.
- Use static free gloves when cleaning the luminaire to avoid markings.

IP Rating

This table provides a quick reference on general use of IP ratings:

IP	Protection	Details
20	Ordinary	LED lights are suitable for all indoor dry applications, such as offices, retail shops, bedrooms, living rooms.
40	Not waterproof	Insects are not likely getting in the lights, but there is no protection from moisture.
42	Drip Proof	LED lights are protected from tools and small wires greater than 1 millimetre. The lights can resist a few drops of water.
44	Splash Proof	Lights are suitable for bathrooms and other applications where water spray is a risk
54	Dust Proof, Splash Proof	Lights have protection against dust and splash, making it suitable for general outdoor use or damp indoor environments.
64	Dust Tight, Splash Proof	Products are fully protected against dust ingress. Also, these lights are protected against water splashing from any direction.
65	Dust Tight, Jet Proof	Products are completely dust tight, as well as protection against low-pressure water jets from any direction.
66	Dust Tight, Watertight	Products are completely dust tight, as well as protection against higher pressure water jets from any direction.
67	Dust Tight, Watertight	Products are completely protected against solid particles, and can be submerged up to 1m in water for up to 30 mins.
68	Dust Tight, Pressure Watertight	Products are hermetically sealed and suitable for continuous immersion in water.

Disclaimers

- BoscoLighting is not liable where :
 - There is product malfunction and or any damages caused by improper use or installation.
 - Installation has not completed by licensed electricians.
 - Safety instructions have not been properly followed.
 - Damage due to site issues such as voltage surges, rodent damage or vandalism.

-
- IP rating reference table has been included on this document to provide guidance for applicable IP rated lights to be used based on the installation environment. Kindly be advised that the lights are not specifically designed to be installed on flammable, hazardous and or corrosives areas.
 - Lights have been designed to operate at an ambient temperature of -10°C to 45°C. Usage outside of this range may have undesired effects including shortening of product life.
 - Lights are only to be repaired under guidance of BoscoLighting, any damages resulting from unauthorised alterations or repairs is expressly not permitted and will result in BoscoLighting Warranties and Liability being void.
 - For any dimming requirements, drivers may not fit within the fitting and shall be supplied with an external driver.
 - Old style Rheostat dimmers are incompatible with LED products, warranty will be void if used on circuit with BoscoLighting products.
 - BoscoLighting has the right to modify or obsolete the design of its products for quality improvement or due to supplier constraints.
 - Products may appear different to product data sheets or installation instructions.